

PROVIDER OF

Apps for Process Simulation

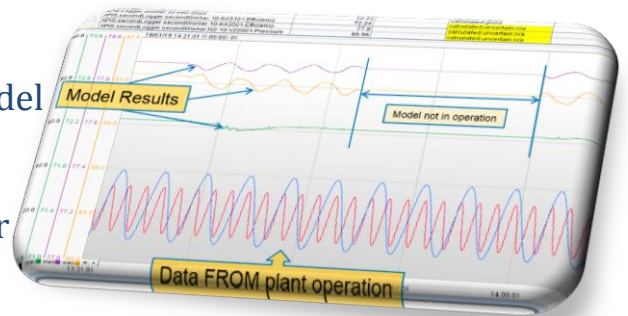
BPT software tools enhance the capabilities of your process simulation tools to improve your engineers efficiency and accuracy

[VIEW OUR SOFTWARE](#)

BPT-TSF™

Feed historical or real time data to your process simulator from OPC or Excel sources

- BPT-TSF™ makes using a model with online data easy and fast to implement
- Reuse your dynamic model to provide virtual data representation of the real plant
- Replicate plant upsets in a dynamic model by feeding the time series inputs from your historian
- Run a dynamic model in parallel to your plant to generate soft sensor measurements
- Model based tuning of PID controllers
- Automate emission reporting
- Automate periodic steady state model runs that use plant data retrieved from a data historian



The bottom line

**Run your plant at peak efficiency with minimal effort
Analyse past upsets and learn how to prevent the next upset
BPT-TSF™ enables a virtual representation of the real plant**

BPT was founded 1998 in Norway. We develop and provide Apps for Process Simulation™. We deliver independent and trusted third-party specialist consultancy services to the upstream oil & gas industry, combining experience with leading edge simulation tools using our Apps.

For additional information please contact us at
+47 67 56 99 90 or send an e-mail to info@bpt.no
<http://www.bpt.no>

Registration and postal address:

Billington Process Technology A/S
Hiltonaasen 36, 1341 Slependsen, Norway

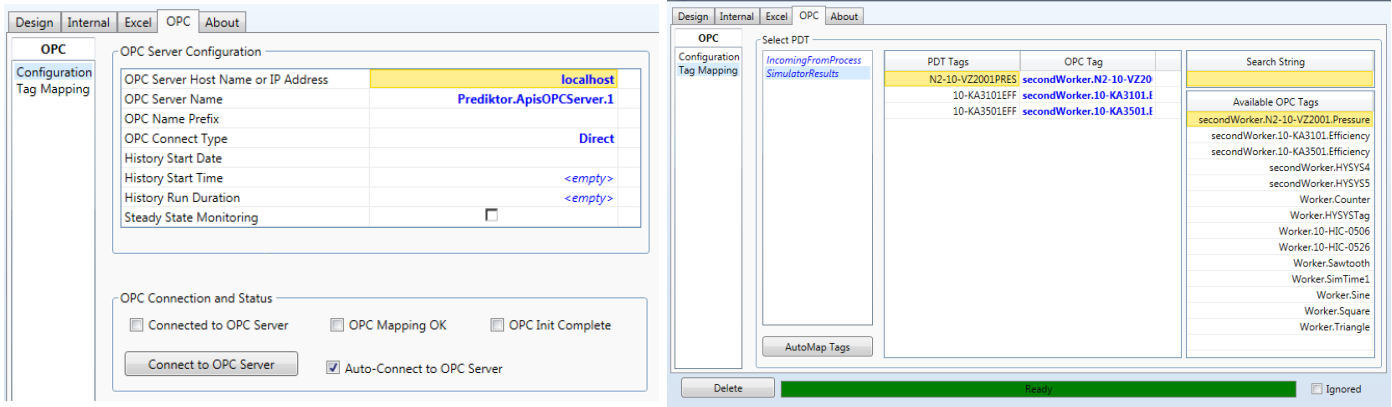




Feed Time Series Data to Your Dynamic Models

BPT-TSF™ let's you feed time series data to a model from various sources. These data can be entered directly in the GUI, they can be retrieved from an Excel sheet or they can be retrieved from an OPC server.

In the case of an OPC server, the dynamic case will run synchronous with the OPC server. With some data historians, an OPC HDA connection can be used to run the model using past data.



Feed Time Series Data to Your Steady State Models

BPT-TSF retrieves the latest real time data from an OPC server every time your model is loaded. Optionally, results can be written back to designated tags on the OPC server.

In this mode of operation BPT-TSF™ is easy to implement for on-line monitoring applications. These report the status of critical equipment like compressors, expanders, absorbers or heat exchangers. Another application is to continuously update a model with efficiencies, fouling etc. such that it provides plant engineers with a model that always reflects how the plant really will respond to changes in operating conditions.

